

CERTIFICATE OF LOCATION OF GOVERNMENT CORNER

EAST QUARTER

Corner of Section

22, Township 106N, Range 42W

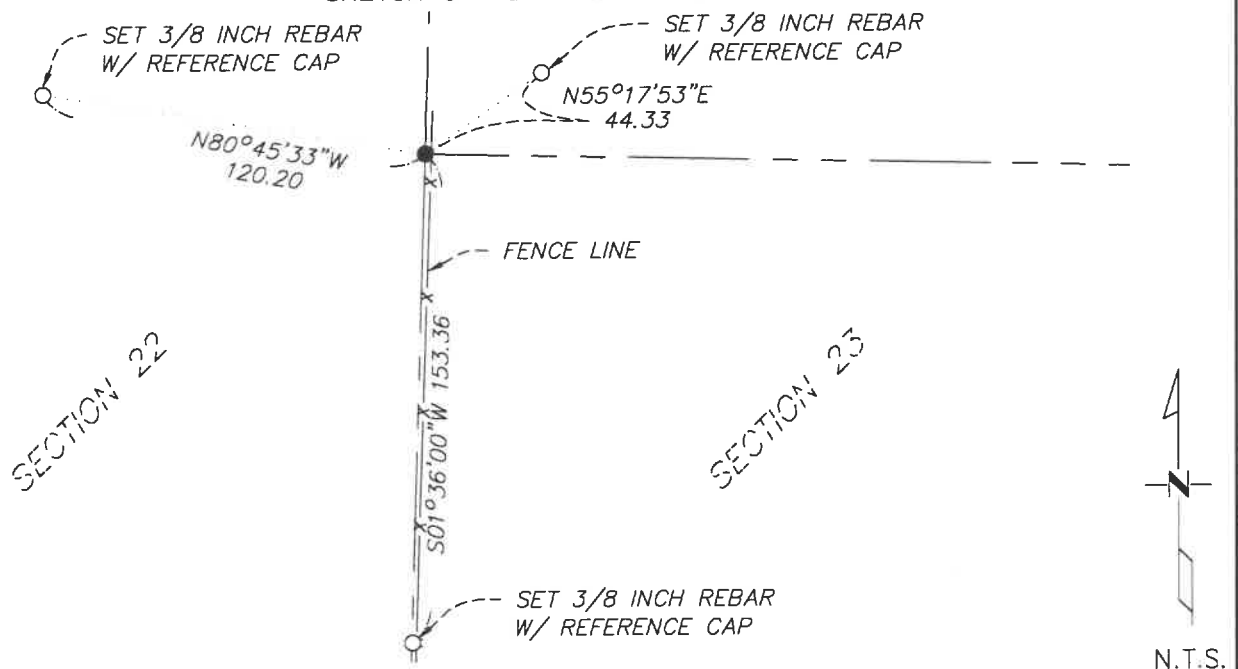
5th Principal Meridian, State of Minnesota, County of Murray.

At the corner location shown on the sketch:

☐ On _____ found a _____
DATE
☐ left monument as found ☐ lowered monument ☐ removed monument (explain)

☒ On 6/7/17 placed SET 1/2" REBAR WITH CAP LS 50840
DATE
HORIZONTAL DATUM IS NAD83 MINNESOTA STATE PLANE SOUTH

SKETCH OF REFERENCE TIES



N.T.S.

Statement of evidence for this corner location is on back of this page.

I hereby certify that this document was researched and prepared by me or under my direct supervision and that I am a licensed Land Surveyor under the laws of the State of Minnesota.

[Signature]

Signature _____

Date 06/17/2024 License No. 50840

Title:

☒ Land Surveyor ☐ Professional Engineer
☐ County Surveyor ☐ County Engineer

OFFICE OF THE COUNTY RECORDER

County of Murray

I hereby certify that this document was filed in the Co.

JUN 20 2024

Recorder's office at _____ M. on the _____ day of _____ A.D. 20____

County Recorder *[Signature]*

by _____, Deputy

DOCUMENT NO. _____

STATEMENT OF EVIDENCE

East quarter corner Section 22, T.106N, R.42W.

Quarter section corner common to Section 22 & 23, T.106N, R.42W.

1861 G.L.O. notes indicate a post was set in a mound.

2017 In June a crew with Westwood Professional Services, searched for evidence of this corner finding no remnants of the original corner. A found monument at the NE corner, a fence line along the east line of SE Quarter, and a fence lines and gravel roads at the SE corner were used to establish the East Quarter corner.